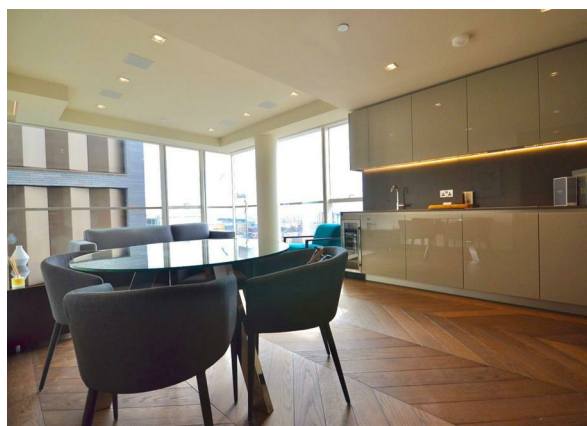
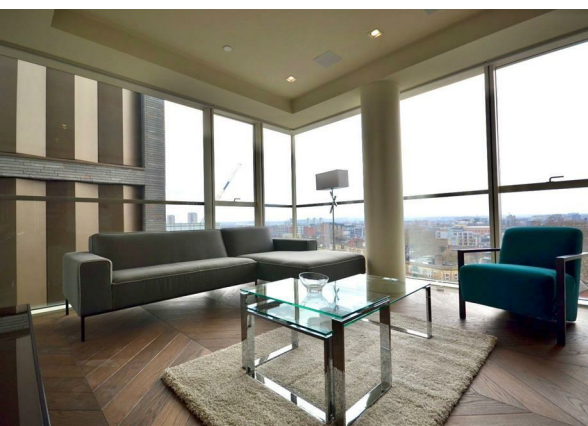
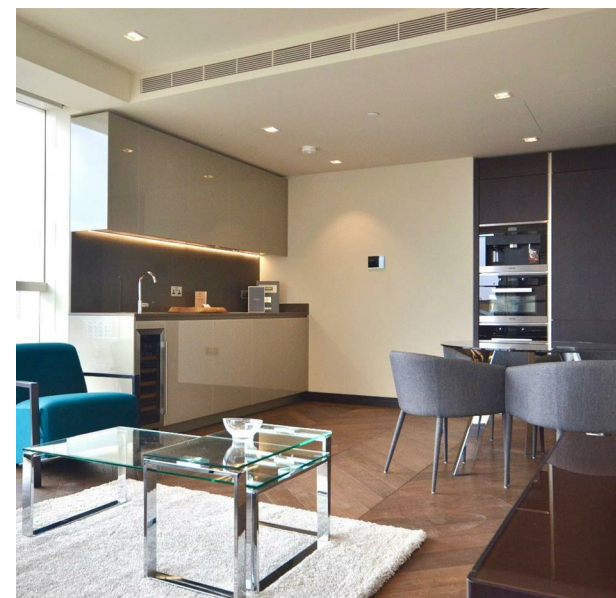
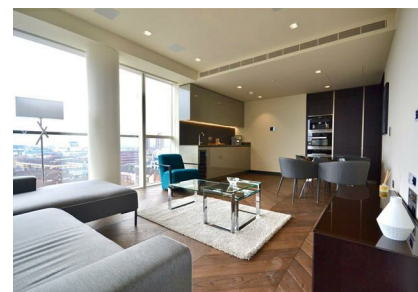
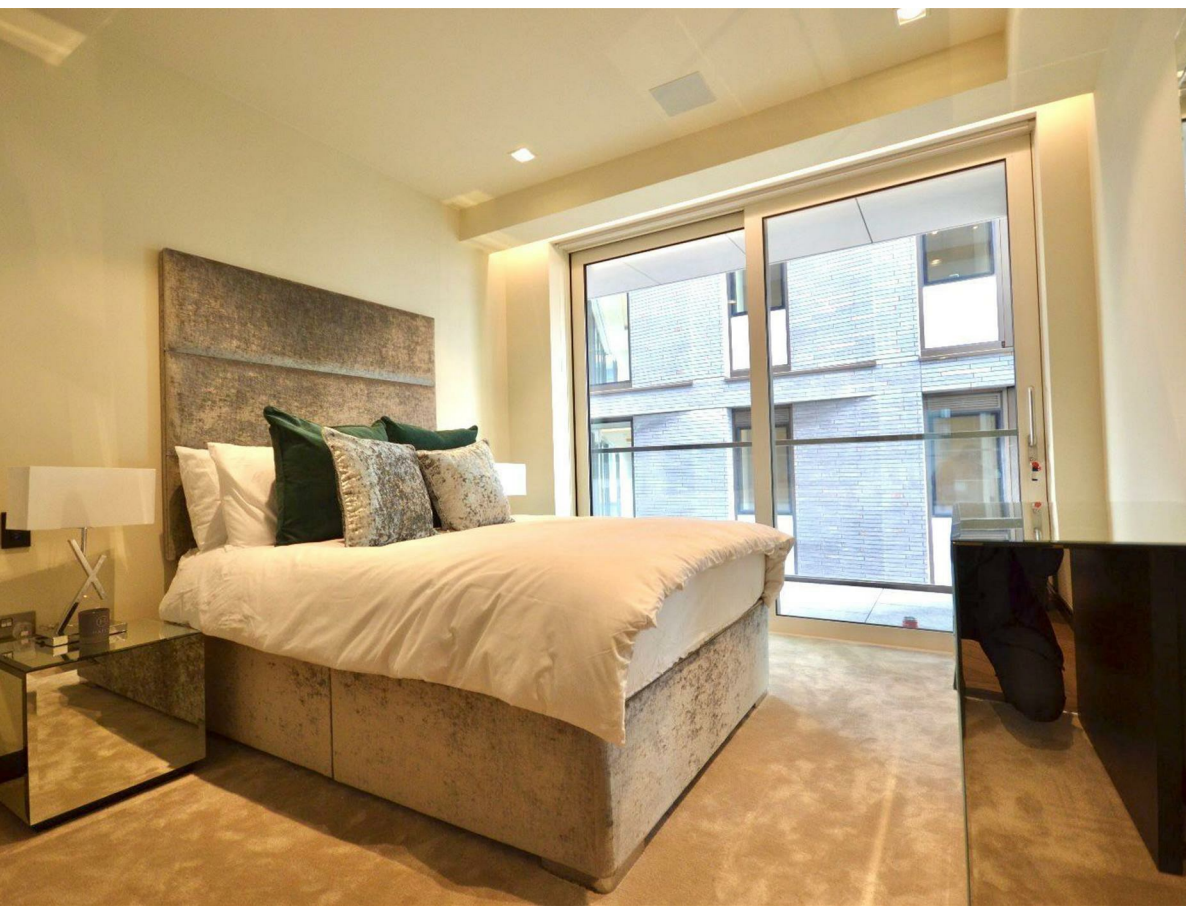


Flat 58, One Tower Bridge Sandringham House, Duchess Walk, London,  
Greater London, SE1 2QX

£4,950 Per Month

**COMPLETION**  
SALES & LETTINGS





# Flat 58, One Tower Bridge Sandringham House, Duchess Walk, London, Greater London, SE1 2QX

## £4,850 Per Month

### Council Tax Band: F

Nestled in the prestigious One Tower Bridge development, this modern two-bedroom apartment offers a luxurious living experience in the heart of London. Spanning an impressive 807 square feet, the flat boasts a well-designed layout that maximises space and comfort.

Upon entering, you are greeted by a spacious reception room, perfect for entertaining guests or enjoying a quiet evening at home. The apartment features two generously sized bedrooms, each designed to provide a peaceful retreat. With two stylish bathrooms, convenience and privacy are assured for both residents and visitors.

The property is situated in a prime location, offering easy access to the vibrant culture and amenities of the South Bank. Residents can enjoy a variety of shops, restaurants, and attractions, all within walking distance. The stunning views of the River Thames and iconic landmarks further enhance the appeal of this



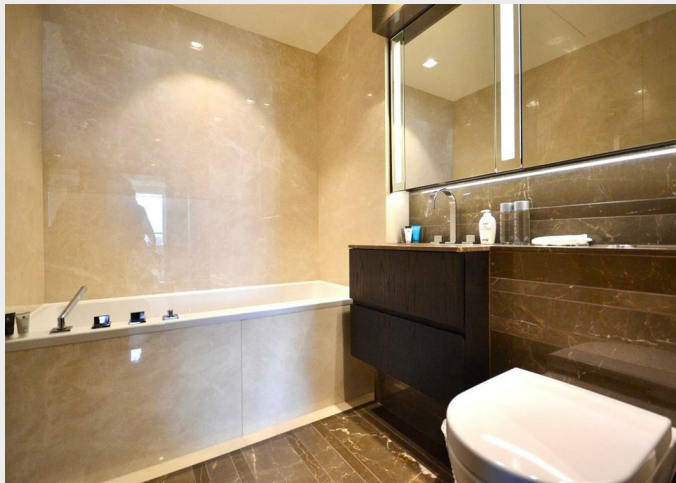












## Eight Floor

Approx. 75.0 sq. metres (807.2 sq. feet)



Total area: approx. 75.0 sq. metres (807.2 sq. feet)

All measurements are appropriate and should not be relied upon.  
Plan produced using PlanUp.

337 Forest Road

London

E17 5JR

02085277007

enquiries@completion.co.uk

completion.co.uk

Energy Efficiency Rating		
	Current	Potential
Very energy efficient - lower running costs		
(92 plus) <b>A</b>		
(81-91) <b>B</b>	84	84
(69-80) <b>C</b>		
(55-68) <b>D</b>		
(39-54) <b>E</b>		
(21-38) <b>F</b>		
(1-20) <b>G</b>		
Not energy efficient - higher running costs		
EU Directive 2002/91/EC		
England & Wales		